

With over 20 years of experience, Mindray hosts a wide range of ultrasound imaging solutions including cart-based and portable systems. Being exported to over 190 countries, Mindray ultrasound systems are today being used by medical professionals for general as well as highly dedicated clinical utility. With a global R&D base spanning over Asia, Europe and America, the ultrasound solutions by Mindray are a result of an integral cooperation with the medical community, allowing for the ultrasound systems to be extremely user centric in terms of performance and usability. Mindray is well positioned to become one of the leading ultrasound imaging solutions provider.



mindray
healthcare within reach

Resona 7
Premium Ultrasound System
With Zone Intelligence

New Waves
in Ultrasound
Innovation

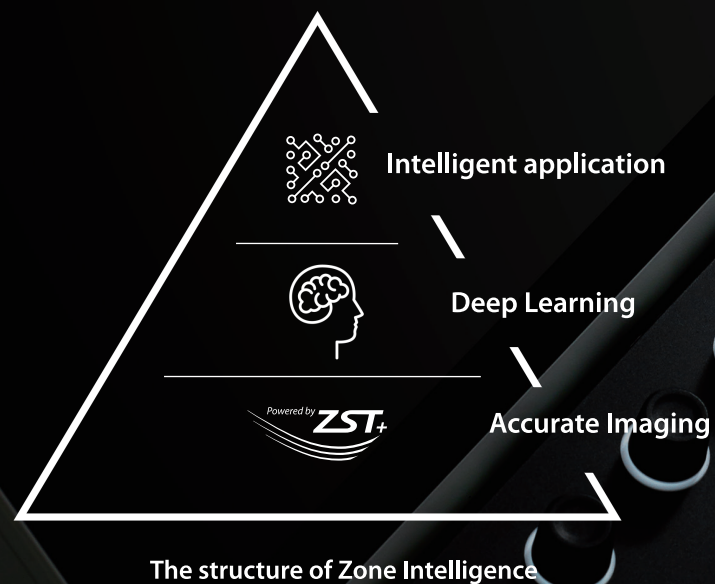


| | |
|---|---|
| <p>Mindray Building, Keji 12th Road South, High-tech Industrial Park, Nanshan, Shenzhen 518057, P.R. China Tel: +86 755 8188 8998 Fax: +86 755 26582680 E-mail: intl-market@mindray.com www.mindray.com</p> | <p>mindray healthcare within reach are registered trademarks or trademarks owned by Shenzhen Mindray Bio-medical Electronics Co., LTD. ©2015 Shenzhen Mindray Bio-Medical Electronics Co., Ltd. All rights reserved. Specifications subject to changes without prior notice. P/N:ENG-Resona7 2.0-210285X16P-20170503</p> <div data-bbox="1085 1868 1288 1924">mindray</div> |
|---|---|

New Waves in Ultrasound Innovation

Further Enhanced by Zone Intelligence

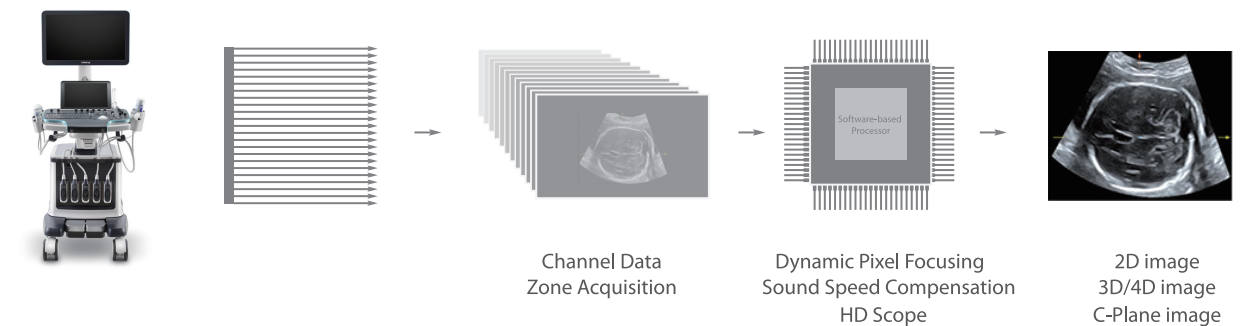
Thanks to the innovative, software-driven ZST⁺ platform, the Resona 7 is continuously evolving with the leading-edge technologies to meet the most challenging diagnostic demands. More importantly, it is designed with the understanding that the wisdom of experts is always precious, and you need more intelligent partner for enhanced speed and confidence. Finally, Resona 7 with Zone Intelligence provides a total solution to help you with diagnostic confidence, efficiency, and standardization across different diagnostic challenges in today's demanding and overburden hospital environment.



It rises.

With core platform advantages of ZST⁺

The channel data based ZST⁺ is an extraordinary innovation, representing an ultrasound evolution. Transforming ultrasound metrics from conventional beamforming to channel data based processing, ZST⁺ is more powerful and flexible to integrate the latest innovative OB/GYN imaging technologies, and to deliver a higher level of imaging performance in 2D, 3D/4D, and even the coronal plane image.



As a result, you can have extraordinary confidence in your practice to:

- Assess fetal condition from early stages
- Provide more accurate diagnosis on fetal CNS
- Deliver a higher level of image quality on the most difficult pregnant women
- Address a wide range of tough challenges in women's health

It progresses.

Innovative clinical tools for confident diagnosis

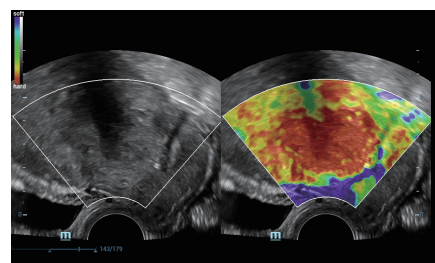
New iLive with Hyaline

Comprehensive upgrading on iLive to significantly improve the detailed resolution as well as anatomical realism. Hyaline is a new rendering method that dynamically applies transparency to rendered structures for a more comprehensive view of anatomy, therefore better displaying internal anatomy from a solid surface.



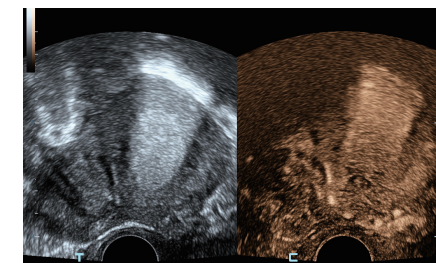
Natural Touch Elastography

Natural touch Elastography provides multiple relative strain and stiffness parameters of breast, cervix, uterus and ovary lesion. With excellent sensitivity and stability, it provides further diagnostic information for more challenging demands.



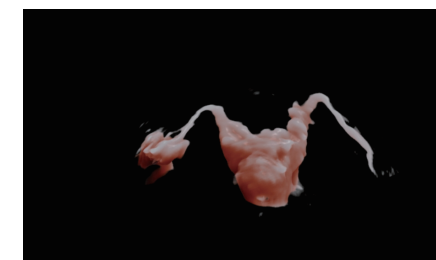
UWN⁺ Contrast Imaging

UWN⁺ (Ultra-Wideband Non-linear Plus) CEUS enables the Resona 7 to detect and utilize both 2nd harmonic and non-linear fundamental signals, generating significantly enhanced images, resulting in greater sensitivity and longer agent duration for better understanding the GYN diseases.



Hycosy(HysterosalpingoContrast Sonography)

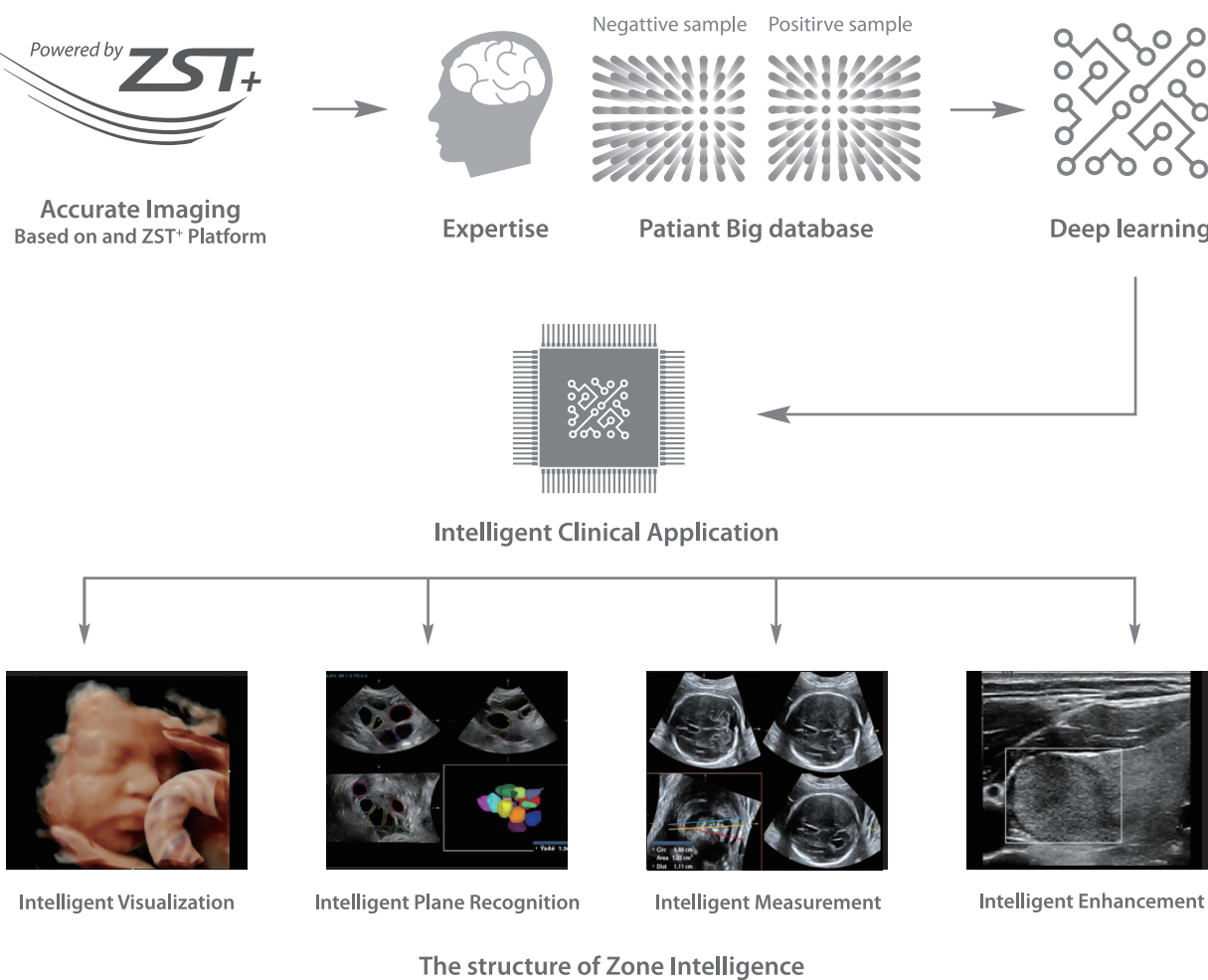
A simple and well-tolerated ultrasound procedure used to assess the patency of the fallopian tubes, as well as detect abnormalities of the uterus and endometrium.



It leads.

Forwarding smart to clinical intelligence

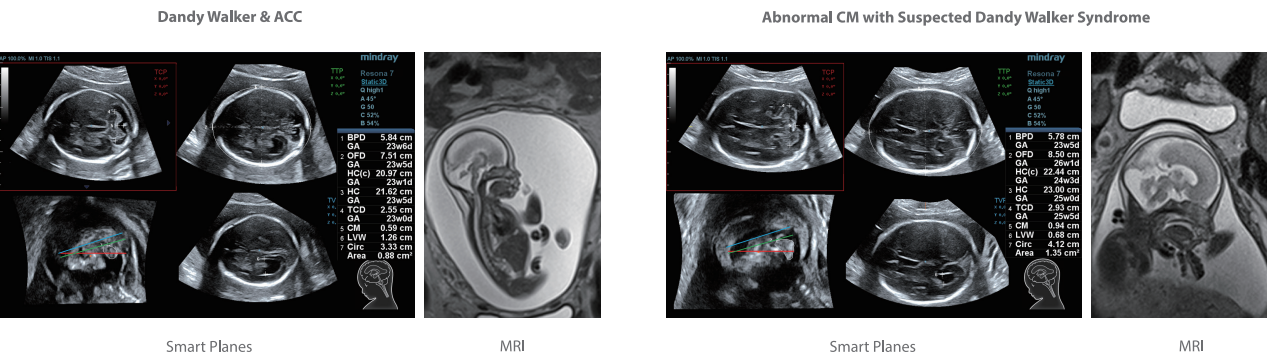
Powered by the channel data based ZST⁺ platform, the new Resona 7 with Zone Intelligence builds up a truly smart mechanism to deliver a new level of intelligence. The core of *Zone Intelligence* is deep learning that is based on patient big data base and clinical expertise. As a result, it is able to provide multiple intelligent retrospective processing, leading to efficient and effective image visualization, plane recognition, measurement, and image enhancement.



Smart Planes CNS

Mindray's exclusive pioneering technology positions the Resona 7 as the industry's first ultrasound system to allow fully automatic and accurate detection of the most significant planes and frequently used measurements of fetal CNS, leading to intelligent diagnosis, improved throughput, and reduced user dependency.

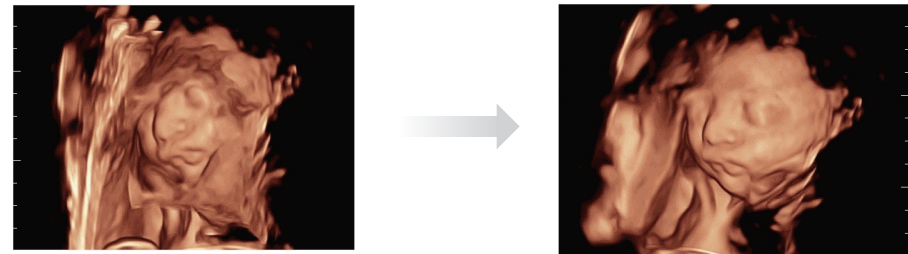
Smart Planes CNS provides a user-friendly tool that greatly improves scanning efficiency through increased accuracy coupled with automated operation. With a simple button click on a 3D fetal brain volume image, the standard CNS scanning planes (MSP, TCP, TTP and TVP) and a range of related anatomical measurements (BPD, HC, OFD, TCD, CM and LVW) are obtained immediately.





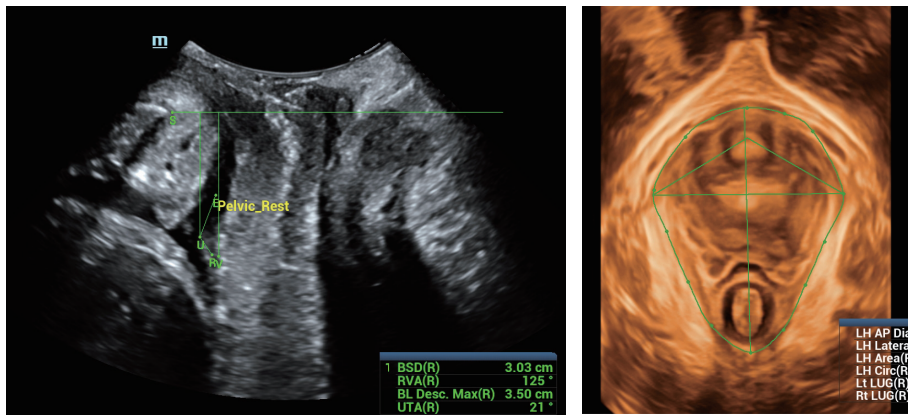
Smart Face

Acquiring an optimal view of the fetal face in 3D ultrasound is cumbersome and time-consuming. In some cases, it is impossible to get rid of the occlusions such as cord, placenta, uterus, and extremities. The new Resona 7 with Zone Intelligence provides a fast and intelligent optimization for fetal face with simply one-touch operation. It can immediately remove occlusions in the volume data and eliminates unwanted noise information, and generates an optimal view of the fetal face with minimized effort.



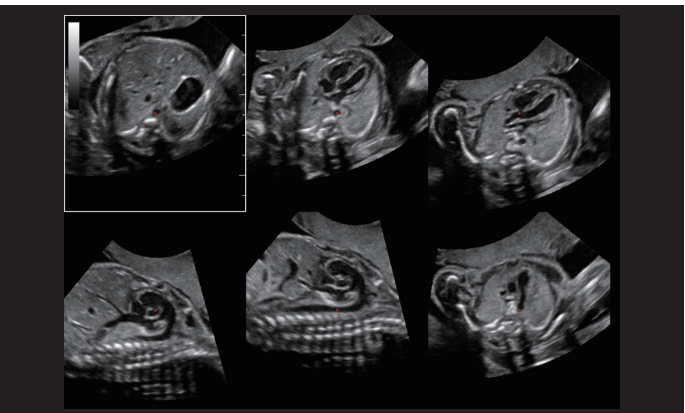
Smart Pelvic

Realizing the increasing importance of ultrasound diagnosis on pelvic floor disorders, the new Resona 7 with Zone Intelligence provides a new solution to greatly simplify the operation procedures, and to minimize the exam time for a standardized evaluation on pelvic floor. With extremely simple user-interaction, it generates a standard coordinate system and automatically provides all related measurements within a few seconds.

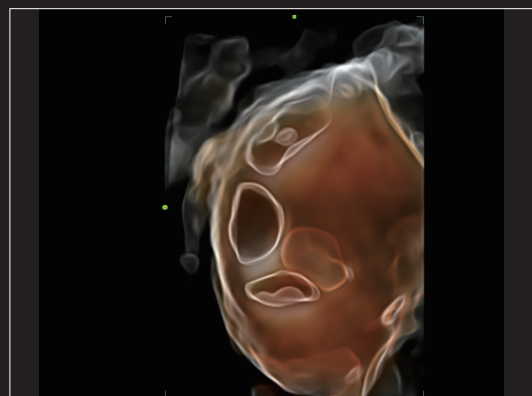
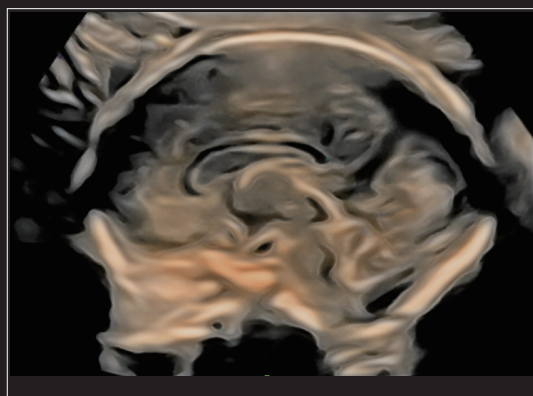
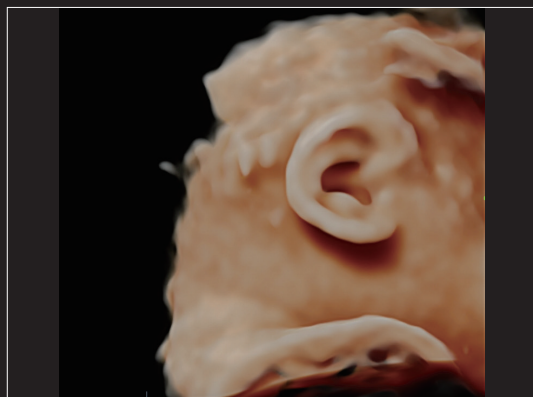
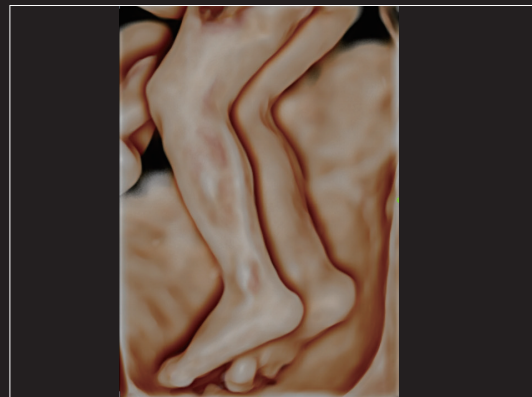
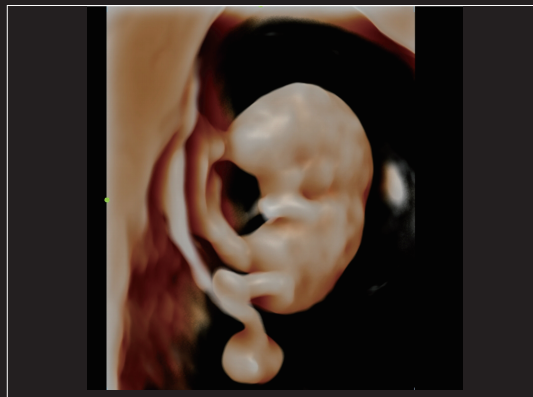


Smart Planes FH

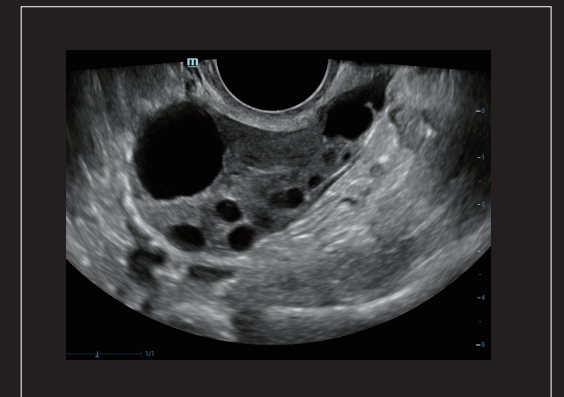
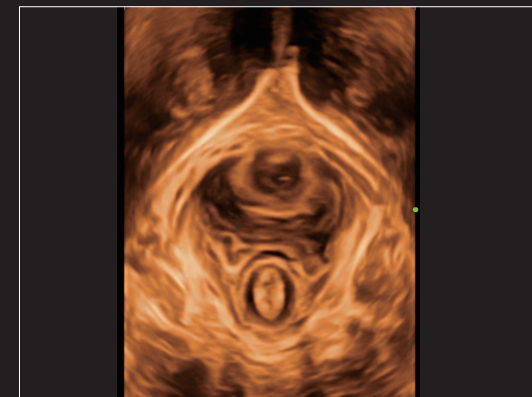
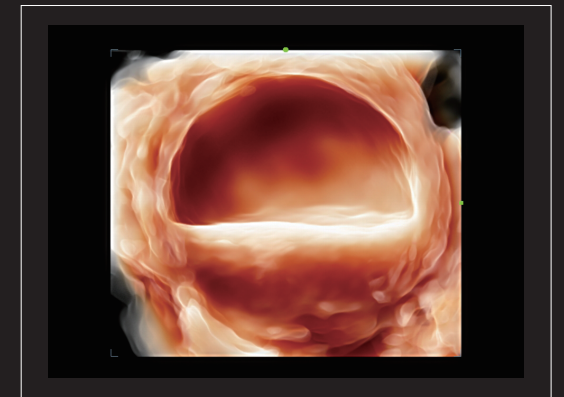
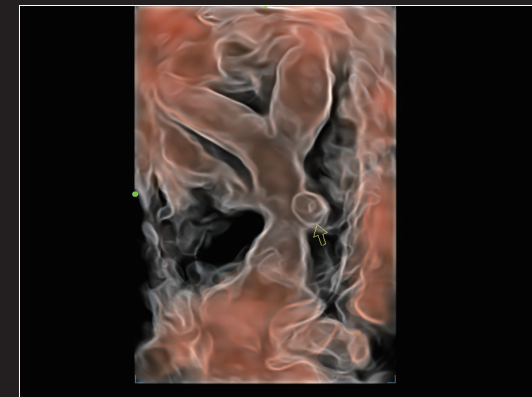
The new Resona 7 with Zone Intelligence has further extended the capability of Smart Planes for intelligent fetal heart diagnosis. With extremely simple user-interaction of defining one point, it allows fully automatic and accurate detection of six most important fetal cardiac planes. In addition, it helps standardize the orientation of the fetal heart images, and therefore improving the efficiency and effectiveness of fetal heart diagnosis.



OB images



GYN Images



It releases

A new standard of image clarity

Better vision, deeper understanding. Based on the cutting-edge ZST⁺ platform, Resona 7 redefines a new standard of image performance to meet the needs of the most challenging clinical practices.

It senses.

Ensuring a better user experience

The Resona 7 is designed around you. Gesture-based operation opens up a new trend in cart-based ultrasound with an agile, smart, and intuitive user experience beyond your expectations. A six-direction floating control panel with electronic height adjustment provides scanning comfort in any position. Inspired innovations drive a better user experience.



21.5"
high resolution LED
monitor

12.1"
tilting multi-gesture
touch screen

6
direction floating control
panel

Gel warmer with
temperature control

Pinless transducer with
light indicator

Central and swivel lock

It resonates.

With innovation,
better diagnosis, and
healthier life

Healthcare is, and remains, one of the most pressing challenges facing humanity across the globe. Technology, the core driver in many diverse industries, is transforming healthcare to a new level of resonance with unprecedented clinical precision, diagnostic confidence, patient safety and satisfaction. The same is true for ultrasound.

With more than 20 years' experience in ultrasound development, Mindray constantly endeavors to integrate the most advanced, reliable ultrasound technology to products of amazing quality, for increasingly enhanced clinical confidence and patient care. Moreover, with the understanding of today's demanding and overburden hospital environment, the Resona 7 delivers a leading edge premium ZST+ platform, transforming expertise to clinical intelligence for enhanced diagnostic efficiency and effectiveness. Medical minds think alike. By making ultrasound technology better, we are making lives better.